

Gleanings

a monthly newsletter from The Gesneriad Society, Inc.

(articles and photos selected from chapter newsletters, our journal **Gesneriads**, and original sources)

Volume 12, Number 3

March 2021



This issue includes photos of gesneriads blooming now and Dr. Jeremy Keene's article on the Glenville State College Conservation Research Center.

Hope you enjoy **Gleanings!**

Mel Grice, Editor



Barb Borleske sent the photo on the right of *Streptocarpus* 'Blueberry Butterfly', *S.* 'Harlequin Blue', and *S.* 'Batik' growing in Delaware, USA.

Barb Borleske photo



Gesneriads Blooming Now



Barb Borleske photos

Primulina eburnea



*Primulina
longgangensis*



Sinningia leucotricha in bloom at the College of Biological Sciences, University of Minnesota greenhouse in St. Paul, Minnesota.
Charles Huston

Saintpaulia 'Jolly Mel'
Terri Vicenzi



Aeschynanthus longicaulis
Erica Merchant photo



Saintpaulia 'Shirl's Hawaiian Lei'
Terri Vicenzi

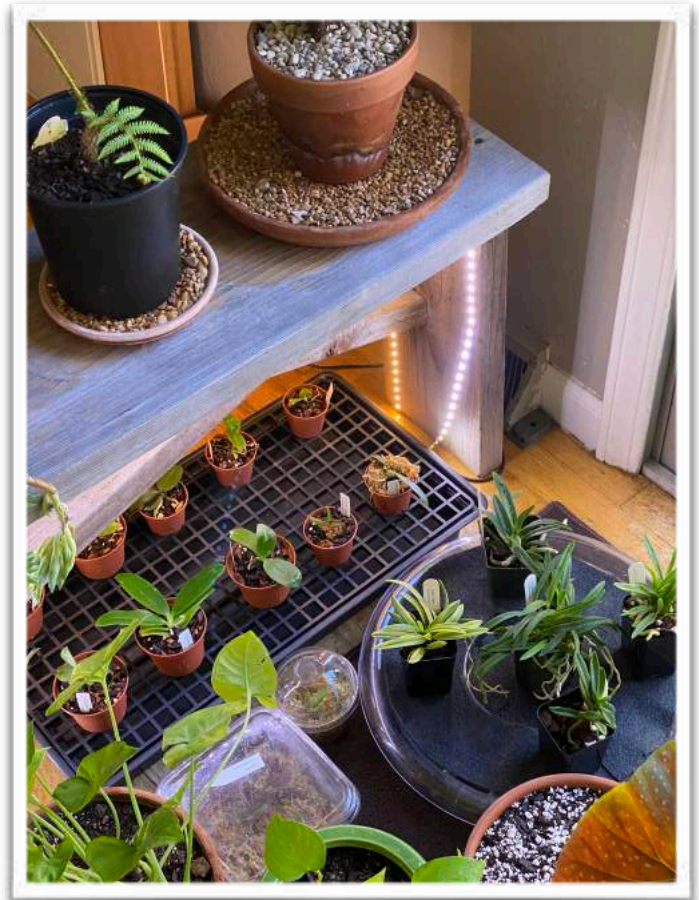
Glenville State College Conservation Research Center

Dr. Jeremy Keene

Glenville State College, Glenville, West Virginia, is pleased to announce the establishment of the GSC Conservation Research Center. This research center will include the current herbarium and a new propagation facility. Dr. Jeremy Keene will oversee the Center to promote visibility and conservation for poorly known plant species. The propagation facility currently houses many rare begonias, gesneriads, and orchids. The hope is to make many of these species readily available to the horticulture trade and provide repatriation plants. Dr. Keene will be directing research students to complete projects that focus on seed germination and tissue culture techniques. These methods will be used to produce plants rapidly or understand conditions needed for cultivation.

The Center currently has around 500 square feet of bench space under lights and will be adding two greenhouses to this later in the year. The greenhouses will provide space to house large parent plants and grow plants for fundraising. The large greenhouse will be 32 by 72 feet, and the smaller house will be around 24 by 32 feet. The smaller house will be maintained at cooler temperatures for high elevation species. We will also have 50 feet of cold frames to overwinter species that need near-freezing temperatures and rest periods. The expanded space, along with a tissue culture lab, will allow us to grow high volumes of rare plants. These plants will be offered to various plant societies and also sold for a donation to the Center. All donations in excess of operational costs will be used to fund student research and travel for additional plant material.

Progress for all these projects and additional taxonomic research in Dr. Keene's lab can be followed through the Center's social media. The social media accounts will be providing short videos on techniques and sustainable growing. The Center looks



Plants waiting at home before the Center was ready.

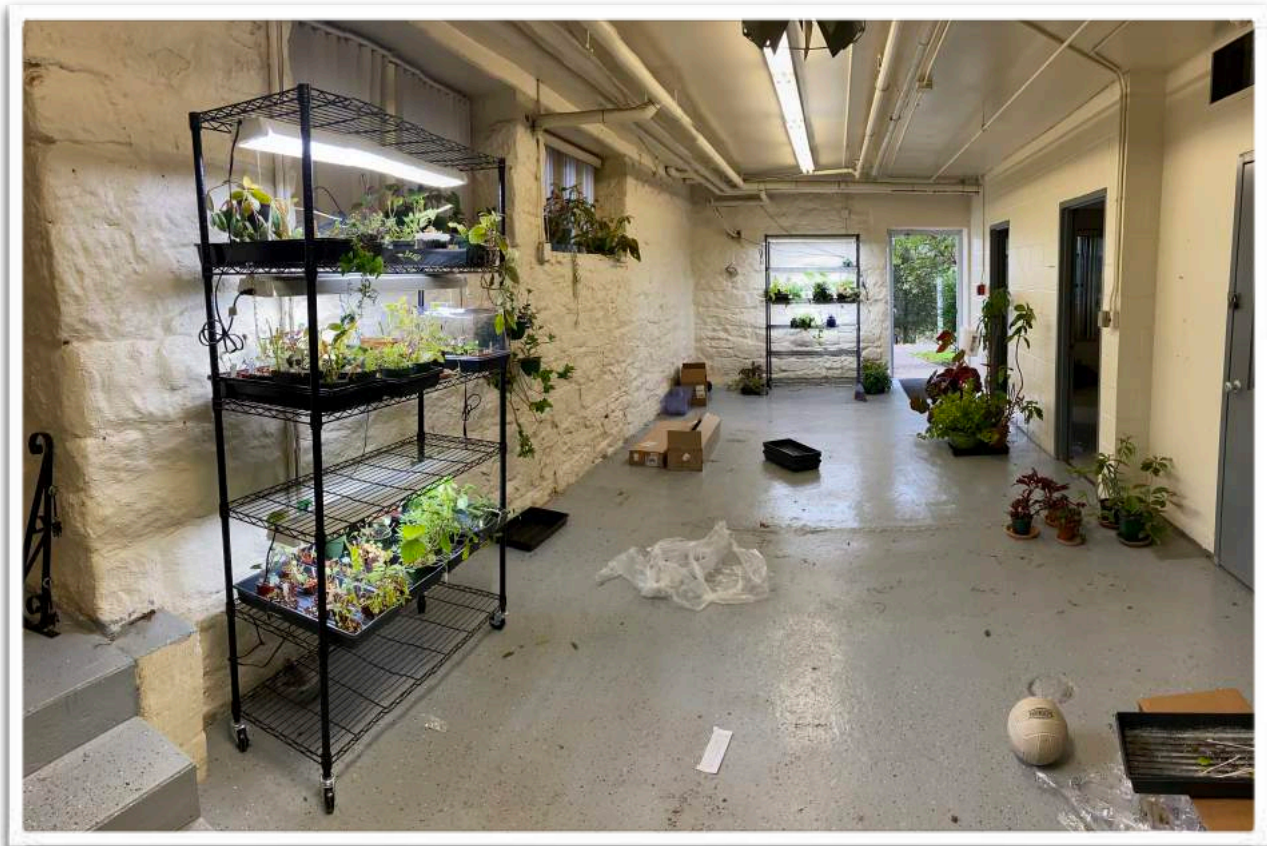
forward to also providing the community with an annual "Plant It Day" starting this April, 2021. This "Plant It Day" will include demonstrations of techniques learned, an abundance of plants to try, and plant products to try or make. This year's event will not be as hands-on to maintain social distancing guidelines.

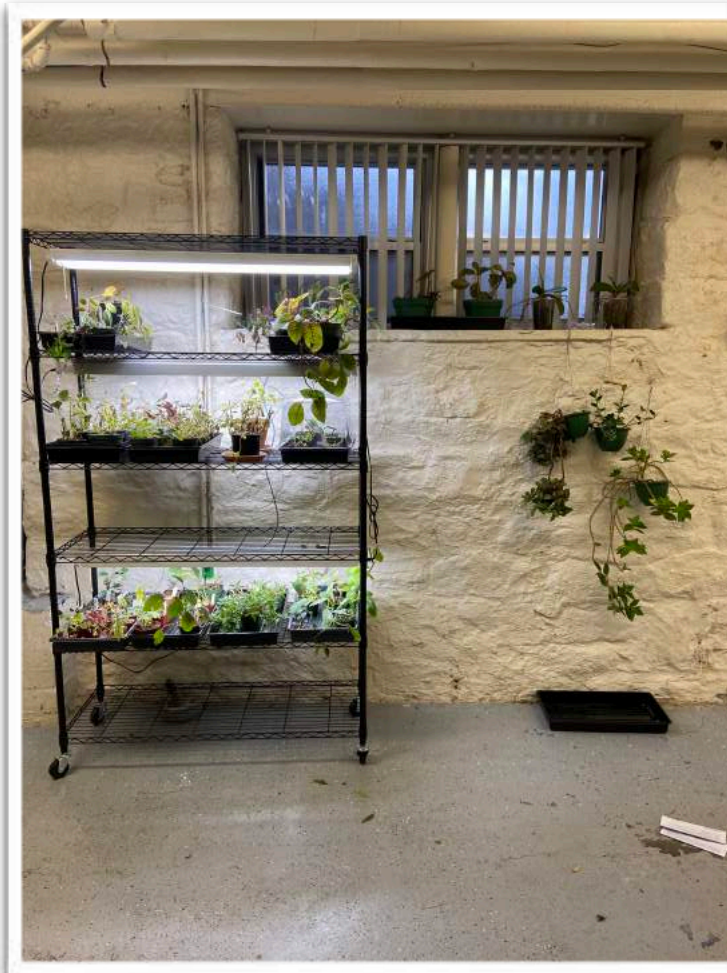
Dr. Jeremy Keene, Assistant Professor of Biology
Director of the GSC Herbarium
Glennville State College, Glennville, WV 26351 USA
ConservationCenter@glennville.edu
#GSCCRC

The electrical outlets are in terrible places.

Jeremy Keene photos

The first day to move in plants — definitely unorganized at this point.





Another example of making it work with the outlets.

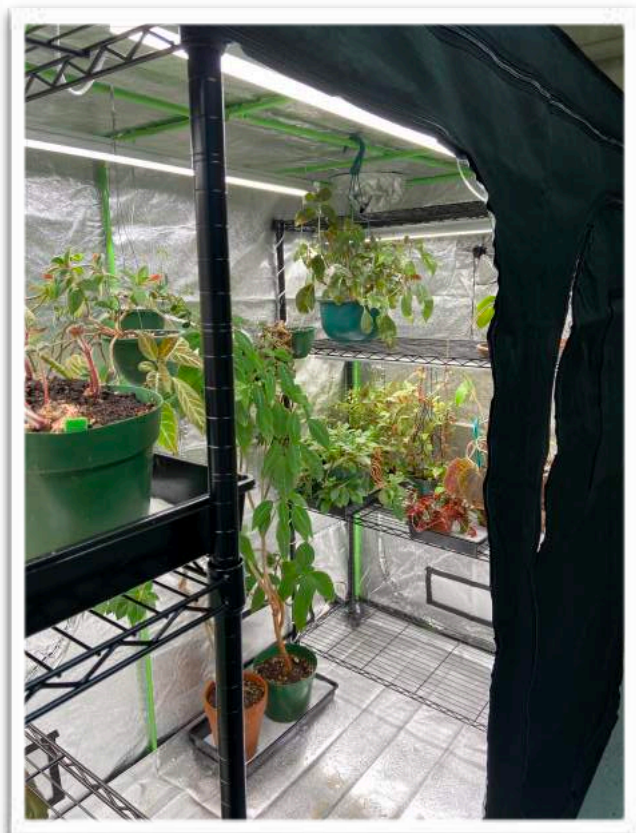
Jeremy Keene photos



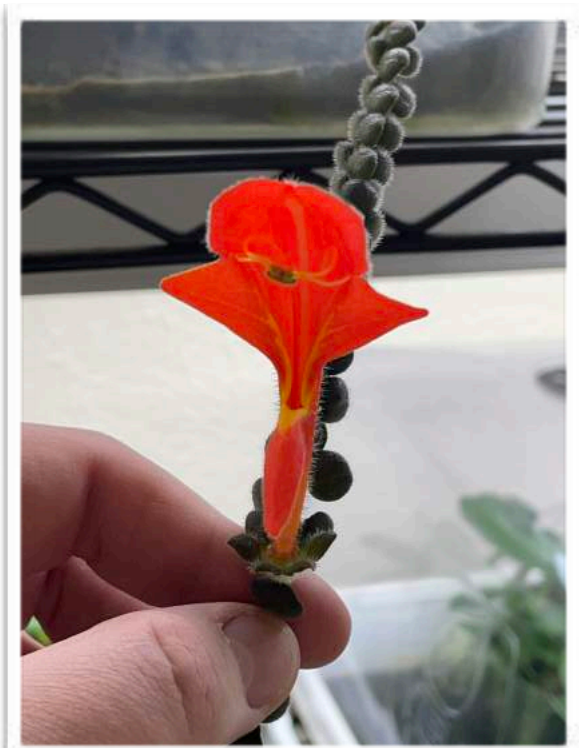
Diastema comiferum



First successful fruit produced.
Nematanthus albus



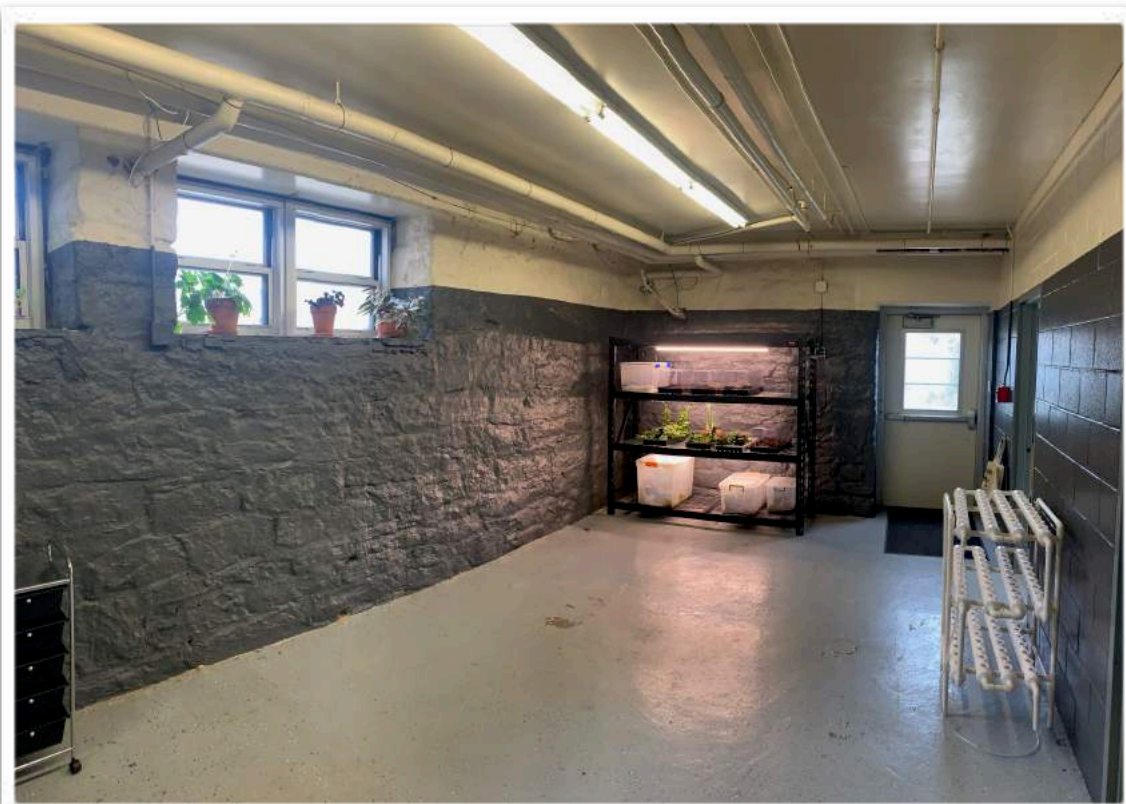
Moving into the plant tent for more light and humidity.



Columnea microphylla



Kohleria 'Peridots Nellie Sleeth'



We figured out the outlet situation and painted the walls a gray to take good pictures. We are waiting on tables for this area to do workshops. For the large wall area, there are plans to create a living plant wall by next year.



Nematanthus 'Hawaiian Jade'



Columnea citriflora



Our first round of propagation in the Conservation Center was very successful. We have a lot of space left, but we also have an enormous number of seeds germinating.

Jeremy Keene photos

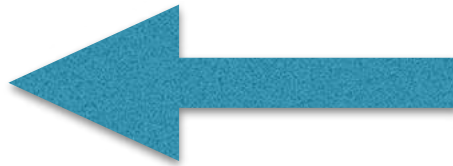
New updated *Gleanings* cumulative index

Terri Vicenzi has compiled a cumulative index of articles, authors, and plant photos that have appeared in *Gleanings* for the first eleven years of publication. The index can be found near the top of the *Gleanings* page on the Gesneriad Society website. (See sample below)

[Index](#)
[2010-2020](#)
[Titles](#)
[Authors](#)
[and Plants](#)



[Download Issue](#)



[January](#)
[2021](#)



[Download Issue](#)

[February](#)
[2021](#)



[Download Issue](#)

When you use [Amazon Smile](#), Amazon will donate .5% of each purchase to The Gesneriad Society. There is no extra cost to you, and you will be supporting the work of The Gesneriad Society in research, education, and conservation. Give it a try!

The URL for the hyperlink is <https://smile.amazon.com/ch/22-6059828>

Austin Grevious
Development Chairperson
The Gesneriad Society, Inc.
aagrevious@gmail.com

Donate

Each time you make a purchase through [Amazon Smile](#) a donation will be made to the Gesneriad Society - by Amazon, at no extra cost to you!
The easy way to donate.

